

# *FSP*

## *CENTRIFUGAL PUMP*

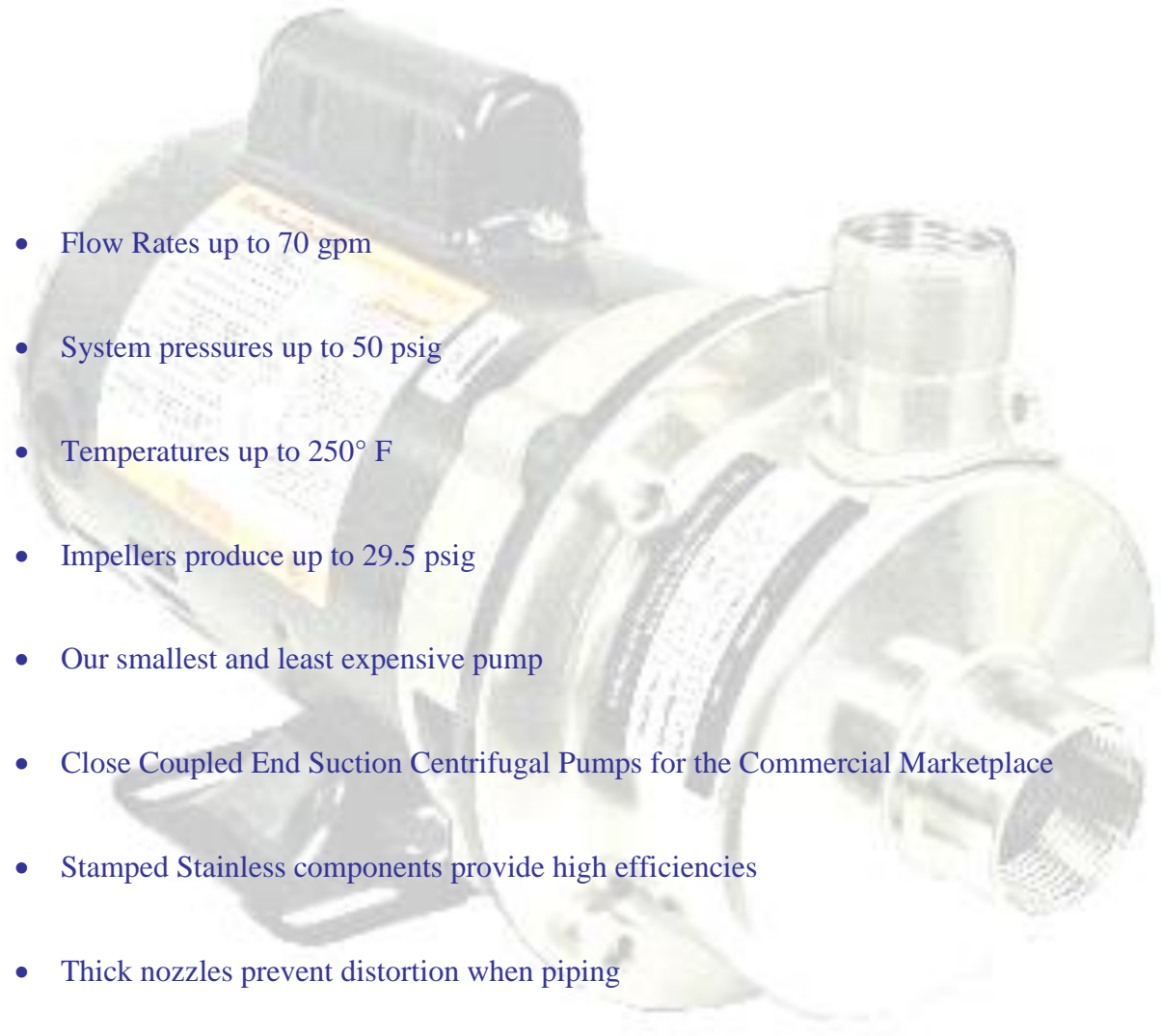


**AMERICAN STAINLESS PUMPS**

STAINLESS STEEL PUMPS FOR THE COMMERCIAL MARKETPLACE

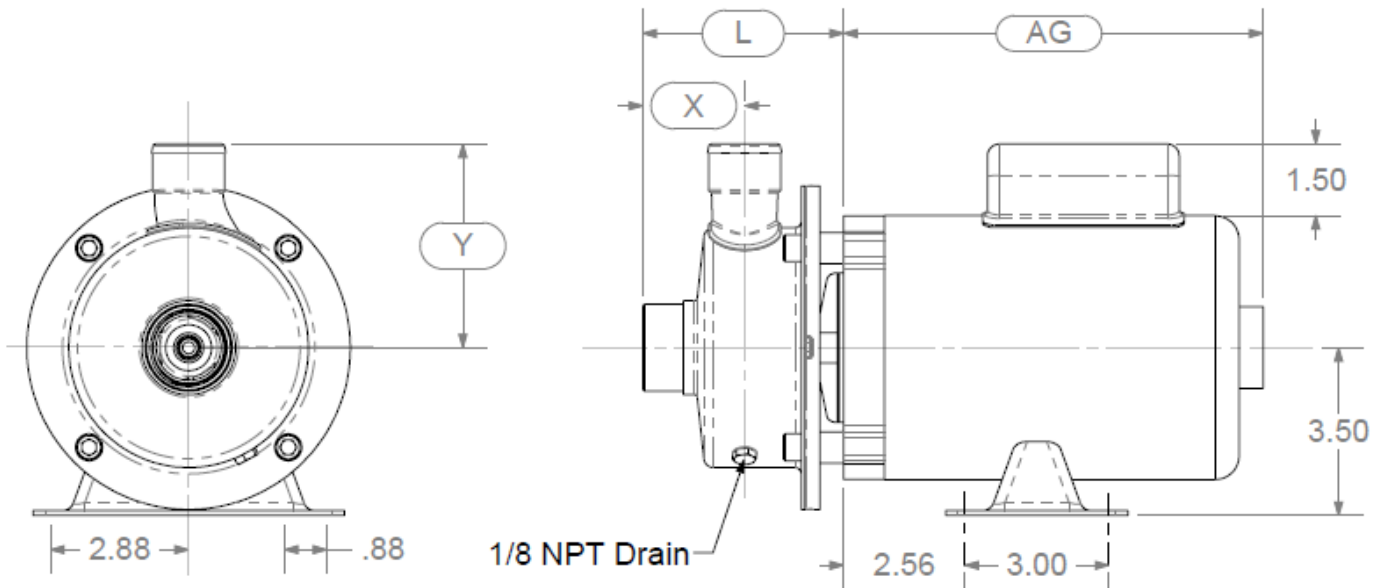
# *FSP CENTRIFUGAL PUMP*

- Flow Rates up to 70 gpm
- System pressures up to 50 psig
- Temperatures up to 250° F
- Impellers produce up to 29.5 psig
- Our smallest and least expensive pump
- Close Coupled End Suction Centrifugal Pumps for the Commercial Marketplace
- Stamped Stainless components provide high efficiencies
- Thick nozzles prevent distortion when piping





## FSP Dimensions With Footed Motor



\* Dimensions may vary by motor manufacturer or motor enclosure. Ideally, weights and dimensions listed are the largest for each motor horsepower size likely to be encountered. More detailed “Certified for Construction” drawings are available upon request.

Size	Suction	Discharge	L	X	Y	Motor HP	AG ODP 1Ø	AG ODP 3Ø	Ship Wgt. ODP 1Ø//3Ø	AG TEFC 1Ø	AG TEFC 3Ø	Ship Wgt. TEFC 1Ø//3Ø
FSP	1.25 NPT	1.0 NPT	4.2	2.1	4.3	1/2	9.1	8.3	29 // 25	9.3	12.1	28 // 25
						3/4	9.6	8.7	32 // 26	9.8	12.0	35 // 26
						1.0	9.8	8.7	34 // 27	10.0	11.6	37 // 27
						1.5	10.3	9.1	39 // 29	10.5	13.6	43 // 40
						2.0	10.3	9.5	40 // 33	10.8	14.4	45 // 46

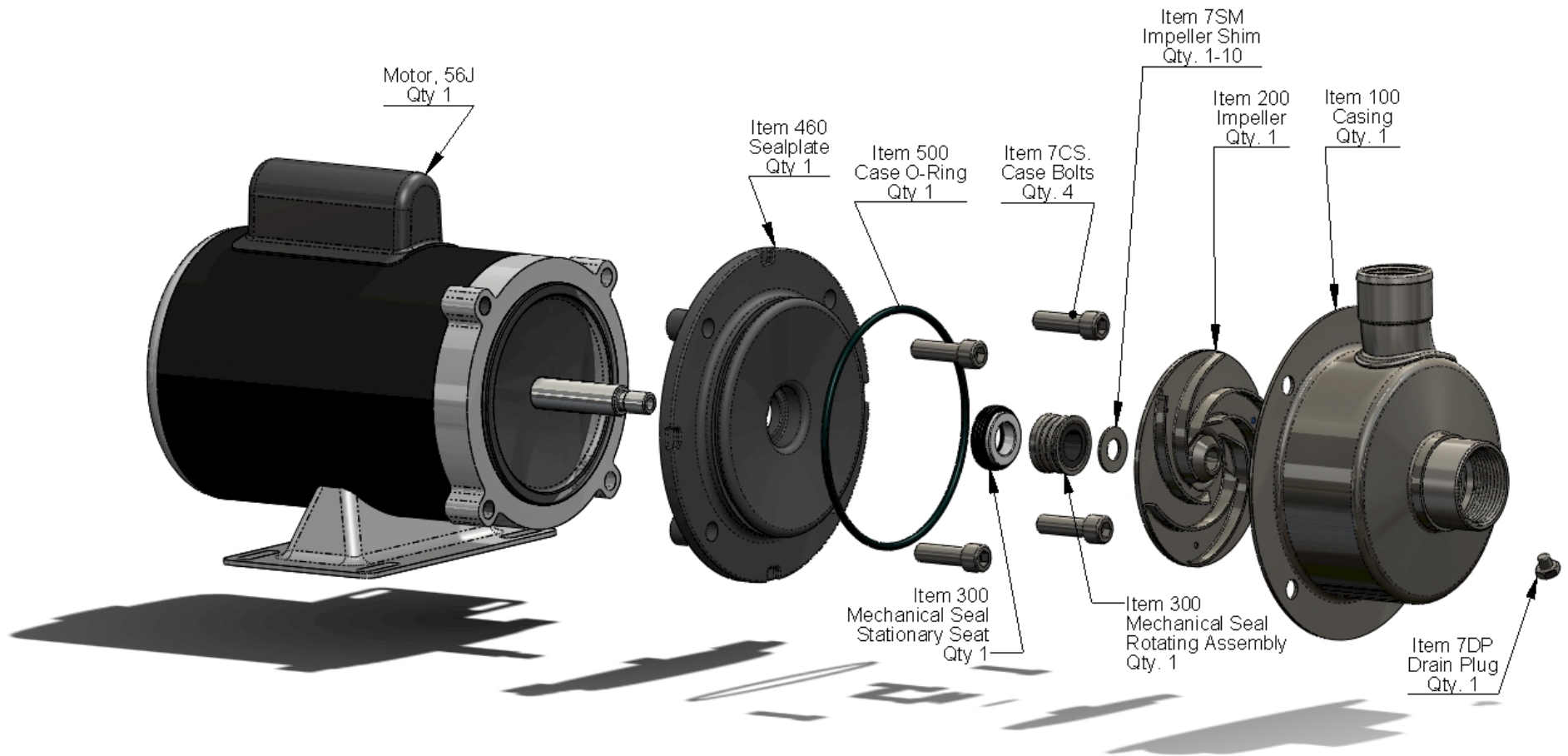
All dimensions in inches  $\pm$  1/16". Shipment weight includes packaging.



# AMERICAN STAINLESS PUMPS

Stainless Steel Pumps for the Commercial Marketplace

## Model FSP Exploded View





# AMERICAN STAINLESS PUMPS

Stainless Steel Pumps for the Commercial Marketplace

## FSP and SSP and 7SP Catalog Number Nomenclature

Rev. Date  
9/21/2018

C 1 56 25 B 1 T 1 X Sample code for a model SSPC, size 1x1.25 with a 5.75" diameter impeller, 0.250 Vane height (at 4.38" diameter), Carbon/Ceramic/Buna Type 6 mechanical seal, with a 1 HP, TEFC, 1/60/115-230V motor, and with a special construction code letter.

<b>1st Symbol</b>	Pump Model	F = FSP: 304 SS, 5 inch case, threaded connections
		S = SSP: Open Impeller, 304SS Pump, 6 inch case, threaded connections
		C = SSPC: Closed Impeller, 304SS Pump, 6 inch case, threaded connections
		D = 7SP: 304SS, 7 inch case, threaded connection

<b>2nd Symbol</b>	Size Code	1 = 1.0" x 1.25" NPT
	Discharge x Suction	2 = 1.5" x 2.0" NPT (SSP Only)
	Discharge x Suction	3 = 1.0" x 1.25" NPT (7SP Only)
	Discharge x Suction	4 = 1.5" 3A sanitary connections

<b>3rd &amp; 4th Symbol</b>	Impeller Diameter	Digits indicate impeller diameter in inches, and eighths of an inch.
		Examples: 43 = 4 and 3/8 = 4.38", 56 = 5 and 6/8 = 5.75"

<b>5th &amp; 6th Symbol</b>	Impeller Vane Height (at a reference ' diameter of 4.38")	Two digits indicate vane height at 4.38" diameter, as indicated on performance curve. Ex: 25 indicates an average vane height of approximately 0.250 inch at 4.38".
		(Note: if the impeller diameter is larger than 4.38", the vane height at the outside

<b>7th Symbol</b>	Mechanical Seal Type & Materials	<b>Type 16</b>		(Std.)	<b>Type-16 o-ring mount</b>	
		B = Car/Cer/Buna	Stock			
		E = Car/Cer/EPR	Stock			
		V = Car/Cer/Viton	Stock		L = Car/SiC/Buna	
		4 = Car/SiC/Viton	Stock		M = Car/SiC/EPR	Stock
		5 = Car/SiC/EPR	Stock		N = Car/SiC/Viton	
		6 = SiC/SiC/Buna	Stock		P = SiC/SiC/Buna	Stock
		7 = SiC/SiC/EPR	Stock		R = SiC/SiC/EPR	Stock
		8 = SiC/SiC/Viton	Stock		T = SiC/SiC/Viton	Stock
		X = Special				

Note: Standard case and impeller o-ring material will match seal elastomer as selected above.

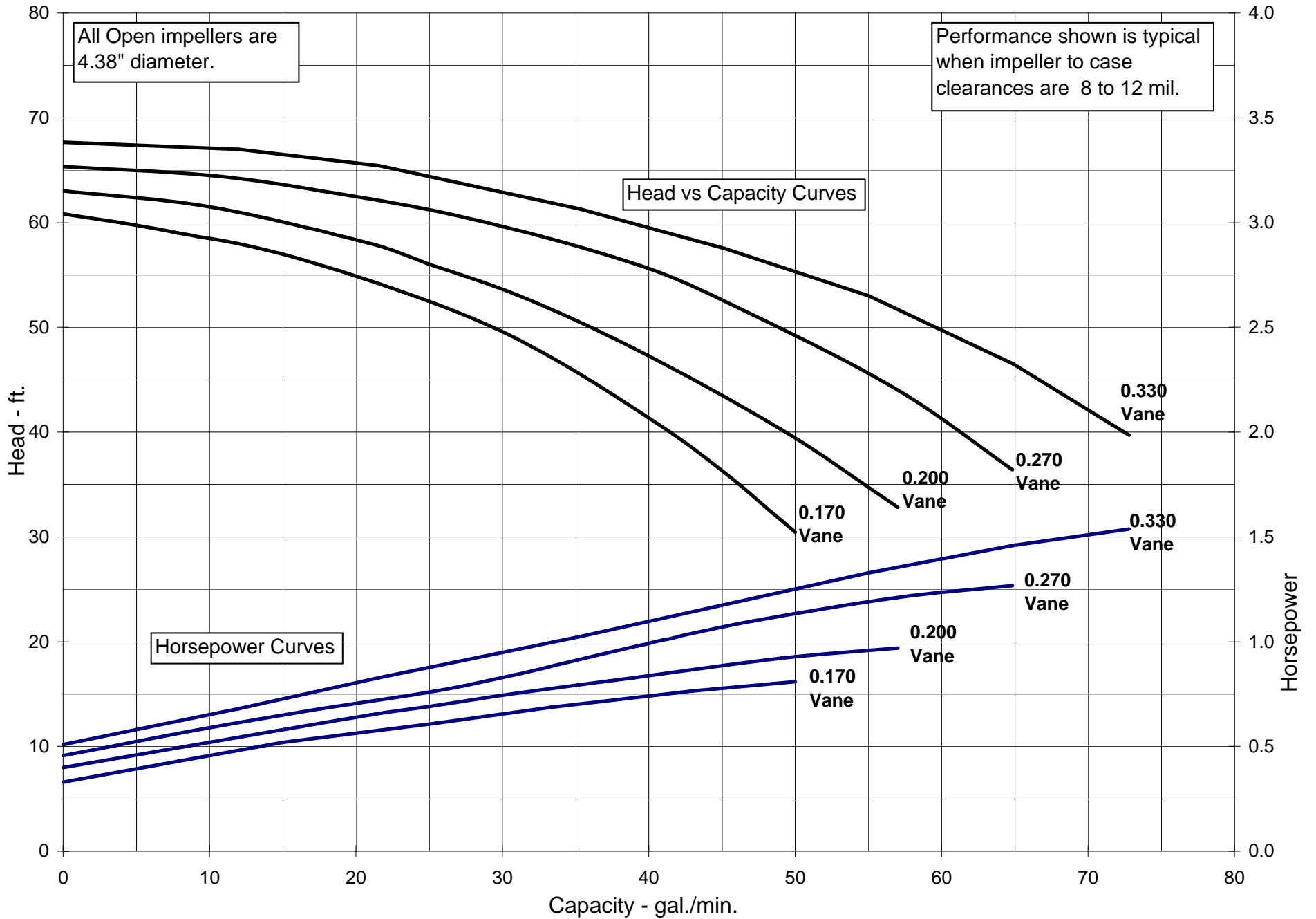
<b>8th Symbol</b>	Motor HP	A = 1/3 HP	1 = 1 HP	3 = 3 HP
		B = 1/2 HP	E = 1.5 HP	5 = 5 HP
		C = 3/4 HP	2 = 2 HP	7 = 7.5HP (non-stock)

<b>9th Symbol</b>	Motor Enclosure	D = Dripproof	X = Explosion Proof	V = TENV
		T = TEFC	W = Washdown Duty	S = Stainless Steel Motor

<b>10th Symbol</b>	Motor Power Details	<b>Power Rating</b>	<b>3500 RPM</b>	<b>1750 RPM</b>	<b>2900 RPM</b>
		1/60/115-230V	1	A	
		1/60/230V	2	B	
		3/60/208V	8		
		3/60/230-460V	3	C	
		3/60/460V	4	D	
		3/60/575V	5	E	
		1/50 or 1/60 (dual)	V	G	V
		3/50 or 3/60 (dual)	S	U	S
		Special	X	X	X
		1/50/110-220V			W
		1/50/220V			Y
		3/50/380V			Z

<b>11th Symbol &amp; Up</b>	Special Construction Codes:	
	Consult factory for special pricing. May indicate a restricted OEM code.	= Stainless Steel Base (no symbol)
		F = Footed Motor
		S = Motor Shaft is 300SS
		X = Special - Consult factory with serial number
		W = welded impeller (no braze)
	V = VFD capable	

# FSP Performance at 3500 RPM





# AMERICAN STAINLESS PUMPS

Stainless Steel Pumps for the Commercial Marketplace

