

Backward-inclined fans



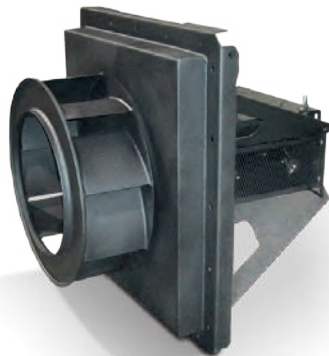
603-210-2479

MIKE@BONARDI.COM

High flow: Up to 100,000 CFM
 High temperature: Up to 1000°F
 SWSI and DWDI configurations available

BCA, BCS backward-inclined fans, single width

- Volumes to 100,000 CFM
- Pressures to 25" WG
- AMCA certified for air and sound performance
- Available in belt driven and direct driven configurations
- Wheel types: Backward curved and airfoil blade
- Continuously welded, heavy gauge, field rotatable housings (Rotatable on fan sizes 122 thru 330 only)
- Available in eighteen basic fan sizes
- Customized options available



QBCA, QBCS backward-inclined fans, square housed

- Volumes to 43,000 CFM
- Pressures to 17" WG
- AMCA certified for air and sound performance
- Available in belt driven & direct driven configurations
- Wheel types: Backward curved & airfoil blade
- Compact continuously welded, heavy gauge, field rotatable square housings (Rotatable to four discharge positions)
- Available in fourteen basic fan sizes
- Customized options available

PBCA, PBCS backward-inclined plug fans

- Volumes to 90,000 CFM
- Pressures to 12" WG
- Available in belt driven configuration only
- Wheel types: Backward curved & airfoil blade
- Continuously welded insulated plug for high or low temperature applications
- Available with or without housing, inlet venturi and venturi supports
- Available in sixteen basic fan sizes and three standard plug depths
- Customized options available

DBCA, DBCS backward-inclined fans, double width

- Volumes to 190,000 CFM
- Pressures to 20" WG
- Available in belt driven configuration only
- Wheel types: Backward curved & airfoil blade
- Continuously welded, heavy gauge, field rotatable housings (Rotatable on fan sizes 122 thru 330 only)
- Available in sixteen basic fan sizes
- Also available in DQBCA & DQBCS compact square design
- Customized options available